

#ACCAPIELLE



A high-angle photograph of a modern kitchen and dining area. The kitchen features dark cabinetry, a stainless steel range hood, and a countertop with a sink and a small green plant. The dining area has a dark wooden table and a blue chair. The floor is a light-colored, textured material. A dark grey rectangular overlay is positioned in the center of the image, containing the text "#ACCAPIELLE" in a light, sans-serif font. The background image is rotated 90 degrees clockwise.

#ACCAPIELLE

**ACCAPIELLE  
#01**

Accapielle Dafne + Astro oak  
Dark porphyry laminate top

Accapielle Dafne + Astro Quercia  
Top Laminato Porfido Scuro

**OPEN TO  
SOMETHING NEW**

•

**WHERE COOKING IS  
AT THE HEART OF IT**

•

**STYLE IS WHAT  
YOU MAKE OF IT**







#01  
**FEEL**

Una texture marmorea nobile ed elegante, la maniglia INWH abbinata è una presenza discreta. A noble and elegant marble texture, the INWH combined handle is a discreet presence.



## #01 DELIGHT

La finitura Astro Quercia delle colonne, a contrasto con gli altri materiali, ha lo scopo di spezzare la linearità della composizione. Una scelta stilistica che dà energia all'atmosfera e regala personalità. In contrast to the other materials, the Astro oak finish of the columns is designed to interrupt the linearity of the composition. A stylistic choice that injects energy into the atmosphere and introduces personality.

GOOD DESIGN IS  
INNOVATIVE

- 

GOOD DESIGN A  
PRODUCT USEFUL

- 

GOOD DESIGN IS  
AESTHETIC



IN ANY GIVEN SYSTEM THE MOST COMPLEX QUANTUM IS ALSO THE LIVELIEST. A COMPLEX SYSTEM THE LIVELIEST QUANTUM IS ALSO THE MOST MINIATURIZED. Society is to become more humanism than the physical materialization of its container. the city is in evolution. necessity.







**ACCAPIELLE  
#03**

Accapielle Iman + Seta Color RAL 7006  
Top Laminato Jala  
Vani a giorno metallici Lavagna

Accapielle Iman + Silk in RAL 7006 colour  
Jala laminate top  
Lavagna metallic open shelving

**THE KITCHEN AS  
A REFLECTION  
•  
OF YOUR  
PERSONALITY  
•  
YOUR KITCHEN  
YOUR RULES**







#03

## PALETTE

Spiccata matericità e carattere deciso dell'isola in laminato Jala diventano protagonisti di questa cucina.  
The distinguished materiality and strong character of the island in Jala laminate become protagonists in this kitchen.



**ACCAPIELLE  
#04**

Accapielle Bayo + Grey Astro  
Graphite quartz grit top  
+ Primordial walnut

Accapielle Bayo + Astro Grigio  
Top Quarzo Graniglia Grafite  
+ Noce Primitivo

**THIS KITCHEN  
IS FOR RELAXING**

•

**THIS KITCHEN  
IS FOR LOVING**

•

**THIS KITCHEN  
IS FOR LAUGHTING**







#04

## MIX MATCH

Un progetto di interni che accentua e valorizza i contrasti dei rivestimenti. Un recupero urbano straordinario per una cucina dal forte impatto emotivo. An interior design that accentuates and enhances the contrasts of the wood cladding. An extraordinary urban rehabilitation for a kitchen with strong emotional impact.



PROJECT AND  
RESEARCH  
•  
OUR  
COMMUNICATIONS  
•  
EMOTIONS AS  
FUNCTIONS

Accapielle Jala  
+ White and Ghianda Astro  
Jala laminate top

Accapielle Jala  
+ Astro Bianco e Ghianda  
Top Laminato Jala

ACCAPIELLE  
#05







**HOW TO  
ENVISAGE  
A KITCHEN?**

•  
**A SPACE  
FOR LIVING**

•  
**A PLACE  
TO SHARE**







#06

## CONTRAST

La nuova moda in cucina è la pietra con grande personalità, dalle decise venature a contrasto. Il nuovo laminato Kayla si può abbinare splendidamente a tutti i modelli del nostro campionario.

The new trend in the kitchen is stone with great personality and strong contrasting veining. The new Kayla laminate can be combined beautifully with all the models in our sample collection.



#06

# SHARE

Grafica lineare del top giocata sull'alternanza dei materiali e dei colori. Il bancone in laminato Azimut Noce è perfettamente abbinato al laminato Kayla

The linear graphics of the top play with alternating materials and colours. The laminated Walnut Azimut counter is perfectly matched to the Kayla laminate.

## ACCAPIELLE CARATTERISTICHE TECNICHE

Anta: frontali in conglomerato ligneo placcato 2 facce con Laminati decorativi ad alta pressione (HPL) sp. Tot 22 mm bordato ABS 1mm nei 4 lati. Incollaggio poliuretano. Disponibile nei decorativi Kayla (Pietra Ardesia) e Jala (Pietra Moka) in finitura Losa, Iman (Ossido) in finitura Urban, Dafne (Carrara) in finitura Plamky e Bayo (Marmo Grigio) in finitura Luna.

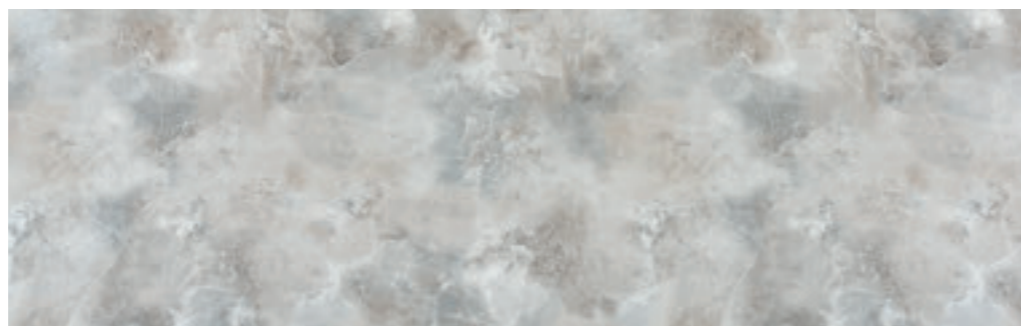
## TECHNICAL DETAILS

Door: particleboard fronts, 2 faces in HPL decorative laminates, 22 mm thick, 1 mm ABS edging on the 4 sides Polyurethane bonding. Available in decorative Kayla (Ardesia stone) and Jala (Mocca stone) in Losa finish, Iman (Oxide) in Urban finish, Dafne (Carrara) in Plamky finish and Bayo (Grey marble) in Luna finish.

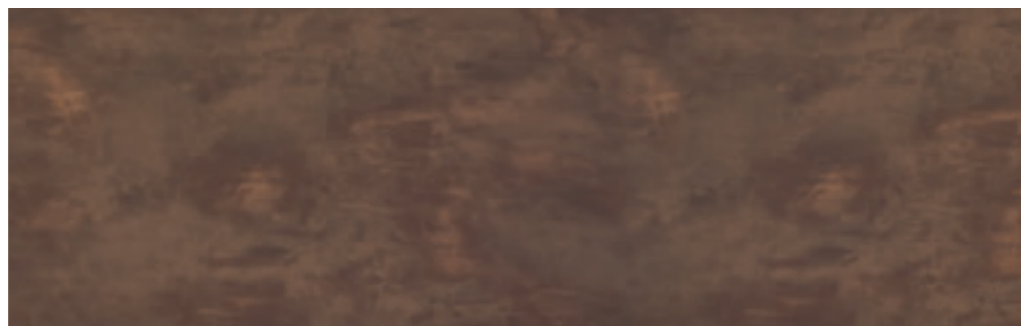
LAMINATO DAFNE



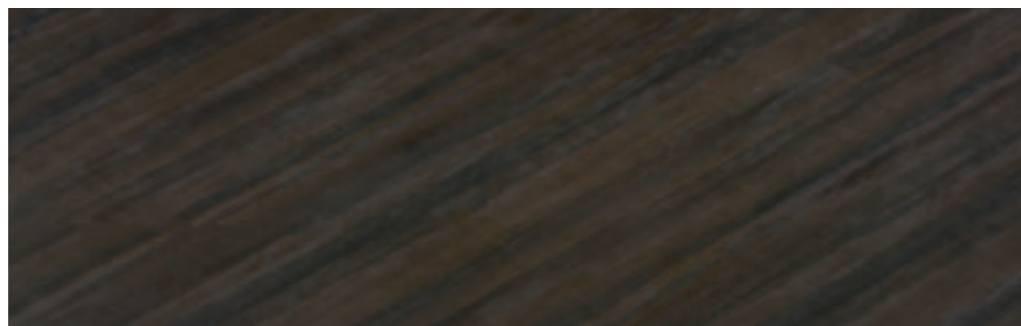
LAMINATO BAYO



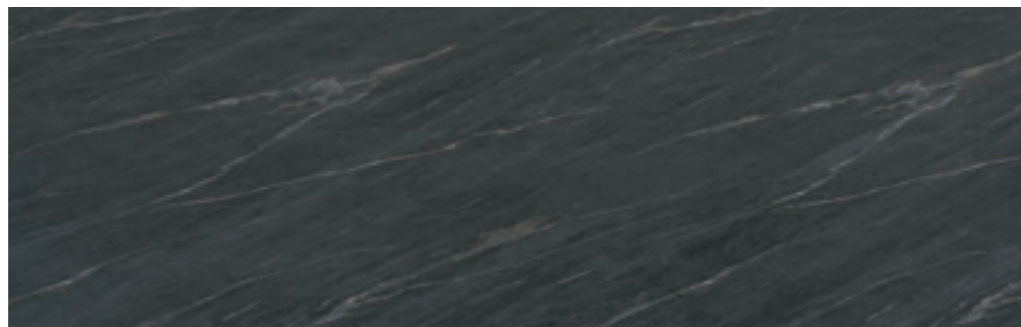
LAMINATO IMAN



LAMINATO JALA



LAMINATO KAYLA



ACCAPIELLE  
#LAMINATED



Via San Martino, 14  
31020 S. Zenone degli Ezzelini (TV)

Cod. Fisc. MDDGLM69S04A703P

P. IVA 05269820261

[fgmaddi21@gmail.com](mailto:fgmaddi21@gmail.com)

cell. +39 3486923412